

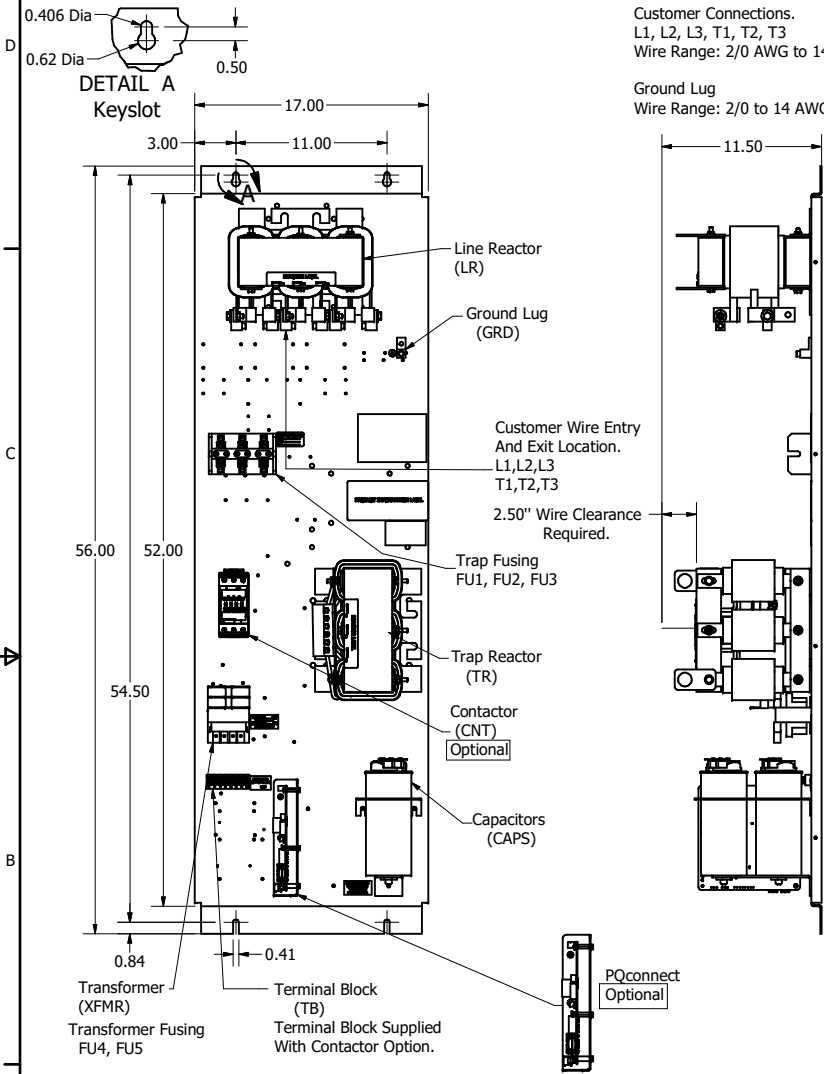
HGP Open Part Number	Schematic Drawing #	Approx Weight (LBS)
HGP0030BW0S0000	30209-S	205
HGP0030BW0C0000	30209	202
HGP0030BW0C1000	30209-PQ	207

HGP Part Number	HorsePower (HP)	kVar	Harmonic	Voltage (V)	Hz.	Phase
HGP0030BW----	30	7.5	5th	240	60	3

HGP Eclosed Type 1 Part Number	Schematic Drawing #	Approx Weight (LBS)
HGP0030BW1S0000	30209-S	295
HGP0030BW1C0000	30209	300
HGP0030BW1C1000	30209-PQ	301

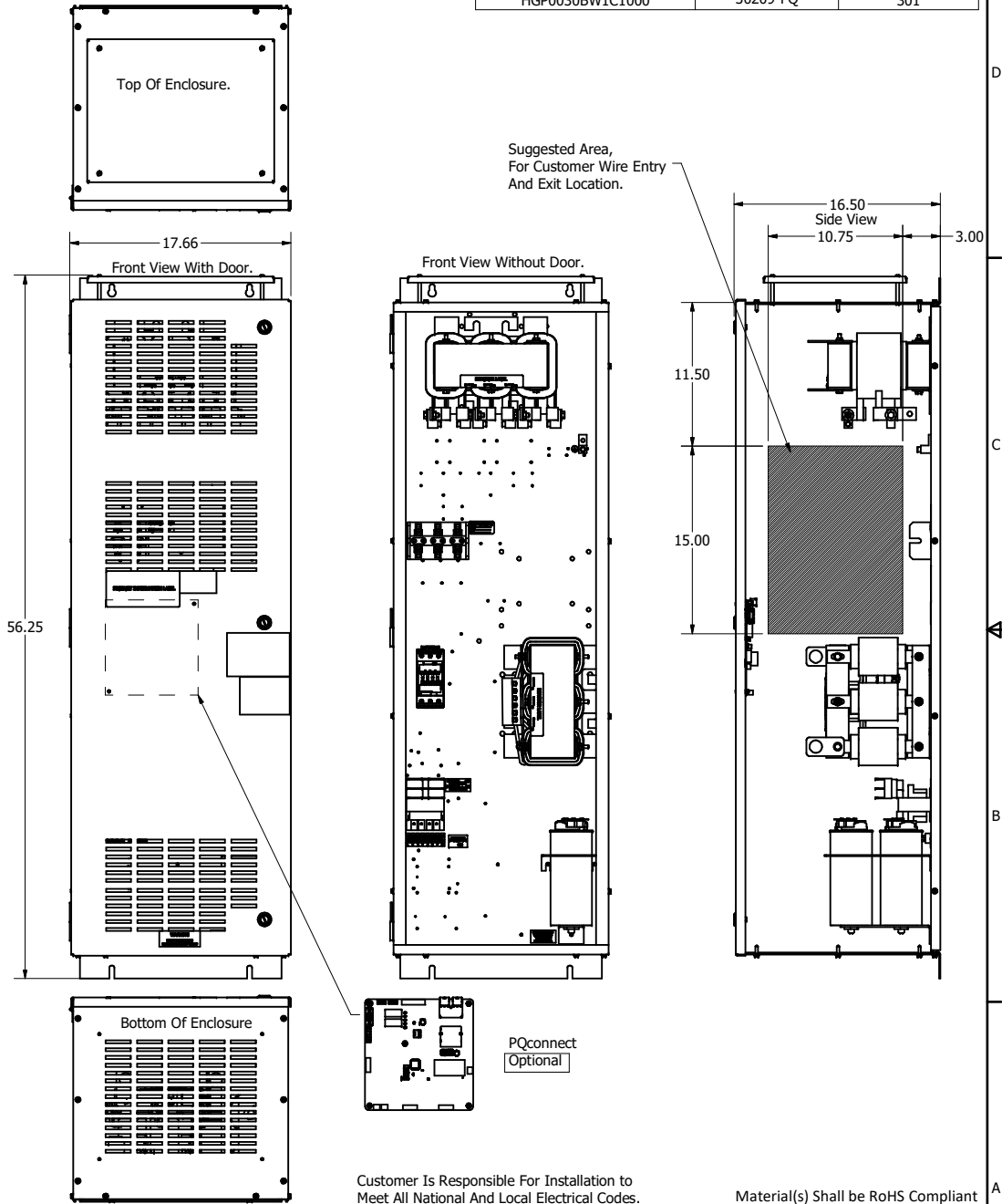
Note: For Torque Information See IOM Manual.
Customer Connections. L1, L2, L3, T1, T2, T3
Wire Range: 2/0 AWG to 14AWG.

Ground Lug
Wire Range: 2/0 to 14 AWG.



Note: Customer is responsible for proper cooling of filter components on open panels.
Capacitors Maximum Ambient 50°C

HGP0030BW----			
Components	0S0000/1S0000	0C0000/1C0000	0C1000/1C1000
Line Reactor (LR)	X	X	X
Trap Reactor (TR)	X	X	X
Capacitor (Cap)	X	X	X
Trap Fusing, FU1, FU2, FU3	X	X	X
Contactor (CNT)		X	X
Transformer (XFMR)	X (Type 1)	X	X
XFMR Fusing, FU4, FU5	X (Type 1)	X	X
PQConnect Board			X



Customer Is Responsible For Installation to Meet All National And Local Electrical Codes.

Material(s) Shall be RoHS Compliant

THE INFORMATION AND DESIGNS CONTAINED IN THIS DRAWING ARE CONFIDENTIAL AND THE PROPRIETARY PROPERTY OF ALLIED MOTION TECHNOLOGIES INC. AND ITS SUBSIDIARIES. NEITHER THIS DESIGN NOR ANY INFORMATION CONTAINED IN THIS DRAWING MAY BE REPRODUCED OR DISCLOSED TO OTHERS WITHOUT THE EXPRESS WRITTEN CONSENT OF ALLIED MOTION TECHNOLOGIES INC. AND ITS SUBSIDIARIES.

NO	REVISION	DATE	BY
A	As Designed	10/05/18	JRN

TOLERANCES (EXCEPT AS NOTED)		DATE	
DECIMAL	.XX ± .25 .XXX ± .10	DATE	10/05/18
FRACTIONAL	± 1/32	DATE	10/05/18
ANGULAR	± 1°	DATE	10/05/18

W132N10611 (Rev 13 Feb 2018)
 Germantown, WI 53022
 © 2023 TCI, LLC
 An **Optical Motors Company**
 Harmonic Guard Passive
 HGP, 30HP, 240/3/60, Open and Type 1
 DESIGNED BY: JRN
 DRAWN BY: JRN
 SCALE: 1/7
 PART NO: 107902DG
 SHEET: 1 OF 1